



Gateway Domestic Violence Center

Annual Report

MESSAGE FROM THE BOARD PRESIDENT



“GATEWAY ALWAYS PROVIDED HOPE FOR SURVIVORS OF DOMESTIC ABUSE. BUT THIS NEW SHELTER REPRESENTS SOMETHING MORE – A PLACE BUILT WITH THEM IN MIND. A TEMPORARY HOME OFFERING SAFETY, HEALING AND THE PROMISE OF A BRIGHTER FUTURE.”

Greetings!

What an eventful year at Gateway Domestic Violence Center! It's hard to believe that not only did we move, but our incredible staff has already been serving clients in our new shelter for nearly six months! As you'll see in this report, it's a remarkable space, thanks to the generosity and support of people like you.

We've doubled the number of beds and rooms available to house and serve our clients. With added meeting space, not only have we expanded our support group offerings, but our board of directors is able to hold regular meetings on site, **enabling us to see the good work Gateway does each and every day.**

My parents were a big influence on me growing up in Tennessee, where my father worked in the Shelby County District Attorney's Office (greater Memphis area) for 32 years. In that time, he spoke often about victim advocacy and even introduced me to the advocates when I'd tag along to his office.

My dad's calling toward justice was always visible. He did his job with both passion and compassion, which are attributes I notice when I spend time around Gateway's team and volunteers. He and my mom set a great example for being compassionate to all and helping those who need help, whether it was weekly shifts feeding the homeless or taking care of kids during support groups for mothers. They helped people who needed help.

The staff at Gateway recently shared a note they received from a very grateful client. In her message the client said, "Gateway helped me find my voice and finally stand up for myself and my children."

At its core, that's what Gateway does – **we help those who need help.** Each day our staff, advocates and volunteers meet survivors where they are, often at their most vulnerable. Asking for help can be a daunting task, especially those who've been abused by a spouse or partner. It's humbling for all of us who have the opportunity and choose to answer the call to help.

For more than 40 years, Gateway has been that critical safety net for this community. Our generous supporters, who enabled us to open the new shelter with no mortgage, have put us in a position to continue providing vital domestic violence prevention and support services. Thank you.

Sincerely,

Nick Challen

“Gateway helped me find my voice and finally stand up for myself and my children.”

GATEWAY BY THE NUMBERS IN 2022...

168 women and children lived in the emergency shelter.

34 nights was the average length of stay in the emergency shelter.

5,768 guest nights of shelter were provided in the emergency shelter.

1,433 hours of volunteer time were contributed.

47 women and children lived in Gateway's long-term transitional housing program.

11 average number of months residents lived in the transitional housing program.

9,122 guest nights were provided in the transitional housing program.

\$12.75 average hourly wage of transitional housing residents

111 adult survivors of domestic violence attended support groups.

112 children participated in support groups.

1,564 total number of clients served – both residential and non-residential.

2,058 number of crisis calls Gateway answered on the 24/7 hotline.

\$5,512 average monthly amount Gateway paid to help clients with expenses like transportation, childcare, rent deposits, attorneys, and prescriptions.

98% of the adults who participated in Gateway programs said they can better manage their own safety.

97% said they now have a plan of action if they begin to feel unsafe in their relationships.

130 survivors were assisted applying for a Temporary Protective Order.

116 survivors received legal representation (an attorney) through Gateway during TPO hearings.

POINTS OF PRIDE



Gateway Advocate Jennie Pless and her dog, Oscar, who also helps out at Gateway as a therapy dog.

LEAD NIGHT & WEEKEND ADVOCATE RECEIVES RECOGNITION

Jennie Pless, who is the lead night and weekend advocate at Gateway, was recently recognized as **part-time faculty member of the year** in the University of Georgia School of Social Work. Pless is working on her PhD at the University of Georgia and has worked at Gateway for five years. She authored a paper that was recently printed in the Journal of Family Violence. Her article, "They Knew They Were Still Safe with Us": Experiences of Domestic Violence Shelter Staff on Survivors' Experiences in Shelter in the Early COVID-19 Pandemic was published in April 2023 and highlighted the experiences of domestic violence shelter employees around the country during the pandemic.

GATEWAY DONORS SURPASS EXPECTATIONS

Gateway donors fully embraced the agency's campaign to build a new shelter facility, and the results are impressive. On average, nonprofits expect to collect 90-92% of pledges during a multi-year capital campaign. Gateway donors paid their campaign pledges at a rate of more than 99%.

Gateway concluded its capital campaign in 2022 by raising just over the agency's \$4.5 million fundraising goal. As a result, **Gateway was able to move into its new shelter in January 2023 with no mortgage.** Now, all donor dollars the operation of the new facility and its programs and not debt.

STALKING SURVIVOR FEATURED IN NETFLIX SERIES TO SPEAK

Angelyn Thompson, a stalking survivor who was featured in episode one of the Netflix series *I am a Stalker*, will be the featured speaker at the annual Hall County Domestic Violence Task Domestic Violence Breakfast and Briefing at 8 a.m. Thursday, Oct. 5, at the Brenau Downtown Center. The event is free and open to the public. Find more information at gatewaydvcenter.org/breakfast.



GATEWAY EARNS SEAL OF TRANSPARENCY

For the fifth year in a row, Gateway earned the **platinum seal of transparency** from Candid (formerly known as Guidestar) in 2022. Less than 1% of all nonprofit organizations in the United States are awarded the Platinum Seal of Transparency, and Gateway is honored to be part of that elite group.

Gateway Domestic Violence Center

SUPPORT GROUPS

Domestic violence victims come from all walks of life, but they share a common experience -- someone they love and trust hurts them. Whether the abuse is physical, verbal, emotional or sexual, all survivors are welcome in Gateway's free support groups for adults and children. From life skills to art therapy, there are a variety of classes and facilitators.

All sessions are available in English and Spanish. Some groups are accessible via Zoom. Childcare and dinner are free for those participating in person.

GET STARTED

For more information, call Gateway at **770-536-5860**.

P.O. Box 2962 | Gainesville, GA 30503 | www.gatewaydvcenter.org

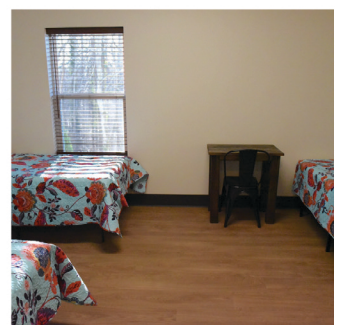
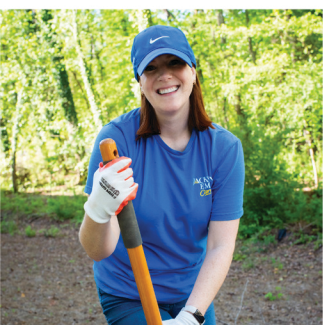


WELCOME HOME

When we moved into our new home in January, we grew to better meet the needs of domestic violence survivors in our community. While our location remains confidential, we wanted to provide a glimpse into our new space, as well as celebrate our amazing team and volunteers who helped us move. We are deeply grateful for the generous support of the donors who helped make this day a reality.

- **21,000 Square Feet Across Three Levels**
- **12 Bedrooms**
(including 2 ADA-compliant) with 35 Beds
(an increase of 17 beds)
- **5 On-site Transitional Apartments**
(including 1 ADA-compliant) with 20 beds
(an increase of 10 beds)
- **2 Women's Support Group Rooms**
- **3 Children's Support Group Rooms**
- **1 Teen Support Group Room**
- **Large Kitchen and Dining Area**
(for residents)
- **15 Staff Offices** (increase of 7 offices)
- **Computer/Technology/Study Room**
- **Quiet/Reflection Room**
- **Library/Reading Room**
- **3 Intake Rooms**
- **Large Gathering Room with Serving Kitchen**





BOARD MEMBERS & STAFF

as of June 1, 2023



Gateway's Staff



Gateway's Board of Directors

BOARD OF DIRECTORS

Nick Challen, President
Joy Griffin, Vice President
Charlie Hawkins, Past President
Nikova Mason, Secretary
Sharon Holt, Treasurer

Loveanne Addison
Lynn Carter
Alaina Conner
Wendy Coto-Puckett
Susan J. Daniell
Kristy Davies
Jenny Floyd
Kristi Griffin
Giovanna Holden
Heather Hollimon
Shannon Hughs
Bernard Larkin
Kelly Lee

Elida Lopez
Anna Moore
Jay Parrish
Sally Pittman
Todd Ratliff
Kelley Robertson
Rachel Sprouse
John Strupe
Vanessa Sykes
Julie Tenold
Lee Towns
Susanne Stribling Turner
Keith Whitaker
Morgan Wood

GATEWAY STAFF

Danica Barron, Night and Weekend Manager
Cindy Bryant, Director of Advocacy

Jessica Butler, Executive Director
Letecia Davenport, Family Advocate
Jackie Denney, Bookkeeper
Jennifer Findley, Night and Weekend Manager
Christine Hernandez, Legal Advocate
Lauren Hutton, Child Advocate
TJ Johnston, Night and Weekend Manager
Lola Longoria, Shelter Manager
Jennelle Major, Family Advocate
Jennie Pless, Night and Weekend Manager

Valery Prada, Family Advocate
Israel Quintanar, Legal Advocate
Dana Skelton, Night and Weekend Manager
Karen Staley, Administrative Assistant
Lisa Thomas, Family Advocate
Janet Whittaker, Director of Operations

SUPPORT GROUP PROGRAM FACILITATORS

Faith Bater
Dawn Columbo
Deana Daniel
Shelby Fisher
Jess Maynard

Beth Oropeza
Savannah Partee
Monica Rios
Lily Sheppard
Sarah Sukumaran
Yesica Turcios-Galvez
Katelyn Warren

THRIFT STORE EMPLOYEES

Betty Jo Hatcher, Cashier
Cathy Ray, Cashier
Sheila Stephens, Team Leader
Cora Stewart, Cashier